



Piloter

The Next Generation of Tablet Ultrasound

wisonic
Your needs we care

Guide The Future



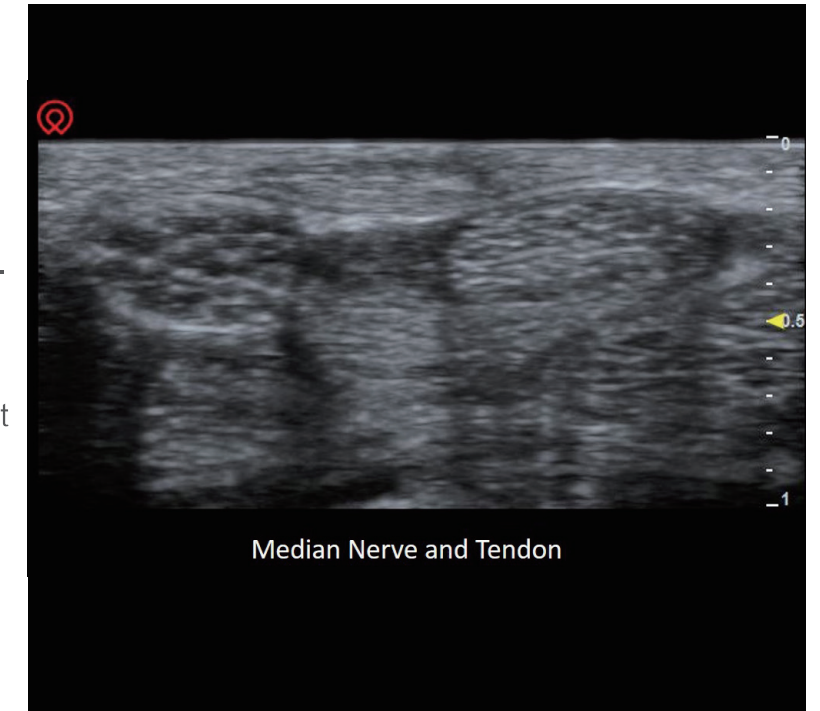
Piloter is a specialised ultrasound system designed to meet the needs for extreme portability while maintaining great imaging quality. The Piloter has an extremely lightweight case making it easy to slip in a briefcase to move between clinics and hospitals. With built-in customised workflow, the Piloter provides a more efficient and systematic experience for a range of applications including musculoskeletal, pain management, vascular, physical therapy, breast and endocrinology to name a few.

✳️ Prominent Imaging

Precision imaging has become the tools of today, and the primary means to ensure accurate medical treatment in a range of areas. The Piloter has been designed with the clinician in mind to solve core demands by providing the best in class imaging on an easy-to-use, intuitive platform. This allows the clinician to ensure they are providing precision, high quality care at all times.

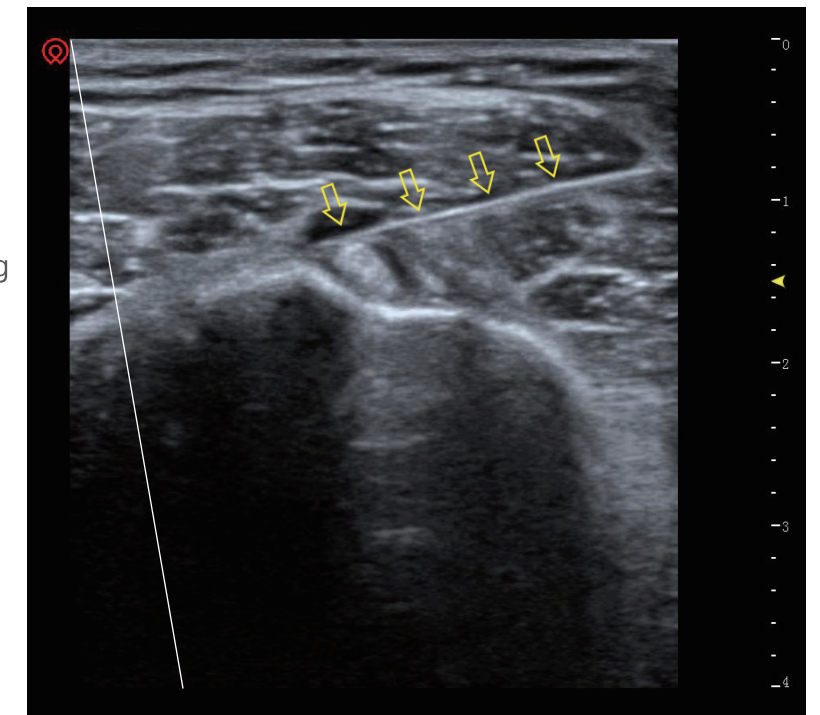
Best in Detail Tissue Imaging

Piloter was built on a Holo™ Platform, which has a 64-beam processor and archives up to 5000 frames per second. Along with the fine image tuning according to specific user requests, the Piloter is able to provide whole field best detail image quality and outstanding resolution.



wiNeedle Intelligent Needle Visualization Technology

- The most challenging work during nerve block procedures is distinguishing the needle from the tissue.
- Piloter answers this by providing a very intelligent wiNeedle feature.
- wiNeedle utilises 3rd generation needle visualisation technology to automatically recognize the needle being introduced to the tissue. This greatly enhances the appearance of the needle to make needle guidance as easy as possible.



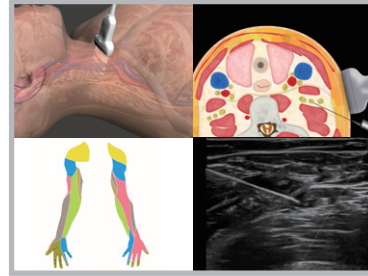
Genius Design

Introducing Wisonic's smart design tablet ultrasound platform. Using miniaturised technology Wisonic was able to leverage its innovative Holo™ platform to a lightweight portable tablet sized system. With its customized workflow and its future proof best-in-class design.



wiLearn education center

Developed by industry leaders for MSK, Pain Management, Anaesthetics and Physical Therapy WiLearn offers a side-by-side interactive educational interface.



Weighing only 2Kg
Extremely lightweight and portable



Complete with a built in tray and dedicated probe holders



Smart, easy to manoeuvre base



13.3-inch touch screen
which allows for horizontal
or vertical viewing display



Built in multi-port adaptor



Desk-top stand



🌐 Versatile Applications – provides best-in-class image quality

A wide selection of transducers covers all imaging applications, and provides stand-out imaging from large patients to paediatrics. An innovative mid-line design along with WiNeedle provides accuracy for confidence in every procedure.

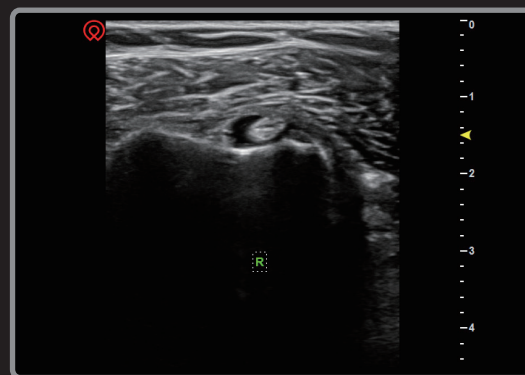


Probe Buttons

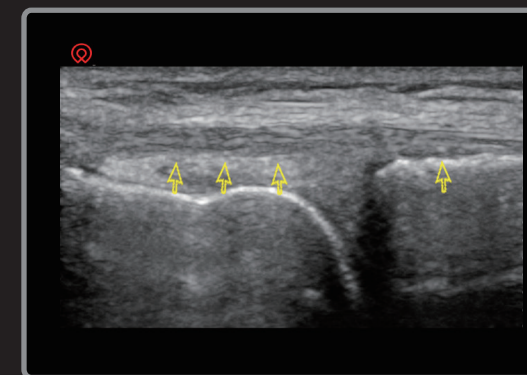
Smart designed user control buttons allows for complete interactive control of optimisations features even when you are some distance from the ultrasound.

Hockey Stick Probe

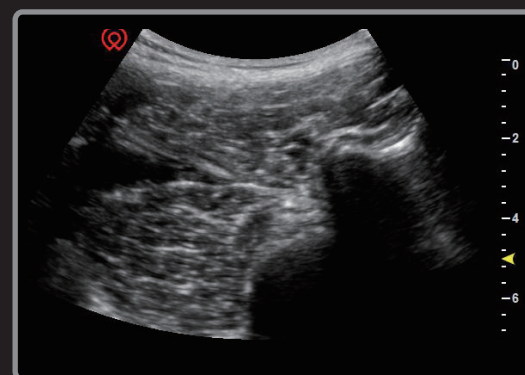
With a high frequency and lightweight design, the hockey stick probe is the perfect tool for detailed imaging where space is limited. Perfect for superficial structures and small joints.



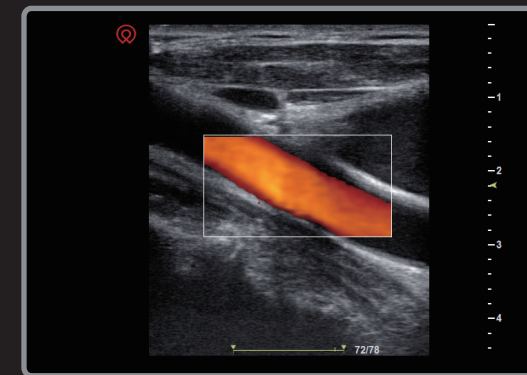
Biceps Tendon



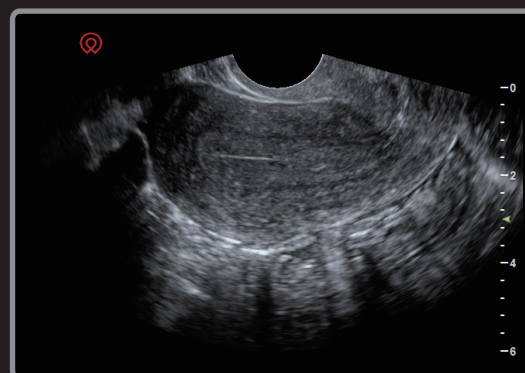
Knee Joint



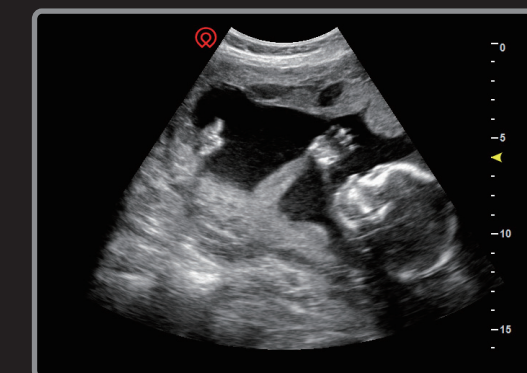
Spine



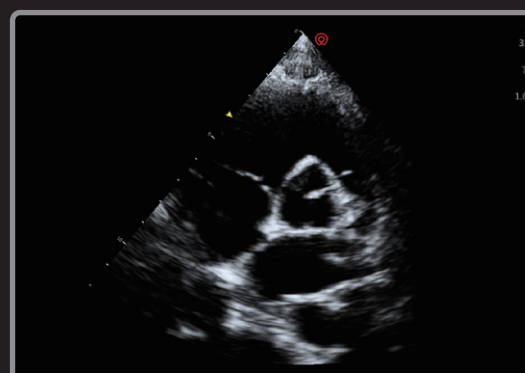
Lower Extremity Artery



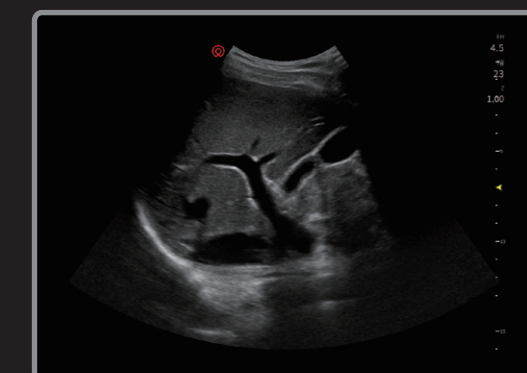
Uterus



Fetus



Aortic Valve



Liver



Shenzhen Wisonic Medical Technology Co., Ltd.

Address: 5th Floor, No.6 Building, Pingshan Technology Park,
Taoyuan Street, Nanshan District, Shenzhen, China

Tel:+86-755-86007788

Fax:+86-755-86007799

Email: info@wisonic.com

www.wisonic.com

